

SONY.

Hi-Fi Products
Service Bulletin

CSA-13

Sony Service Company - Technical Services
A Division of Sony Electronics Inc.
Sony Drive, Park Ridge, New Jersey 07656

Model: CDP-CX100

No. 388R1

Subject: The unit does not find a selected CD

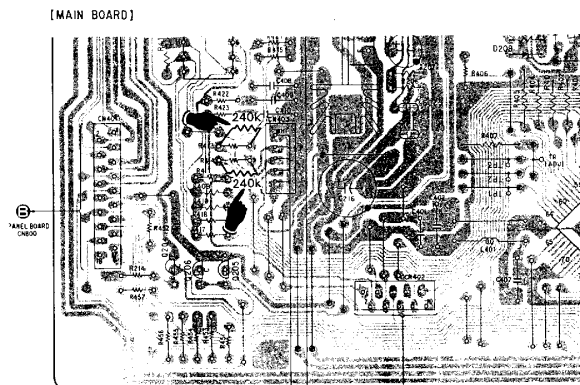
Date: May 27, 1994

Symptom:
(62)

When loading more than 60 discs the CDP-CX100 may experience a problem finding a selected disc. The problem is caused by the weight of the discs, which slows the rotation of the rotary table. The slowed rotary table causes the unit to engage its *Safety System*. Note :The *Safety System* causes the table to rotate in an opposite direction if a finger or an object is caught in the mechanism while it is turning.

Solution: To increase the drive torque of the table, add a 240k resistor in parallel with R413 and R414. These resistors are located on the Main board, .

QTY	DESCRIPTION	PART NUMBER
2	240K OHM 1/4 WATT RESISTOR	1-247-888-11



This modification applies to all units prior to Serial Number 818752

Reference: Tokyo Fax #MS-94115
Autoflagged - NO

PRINTED IN USA